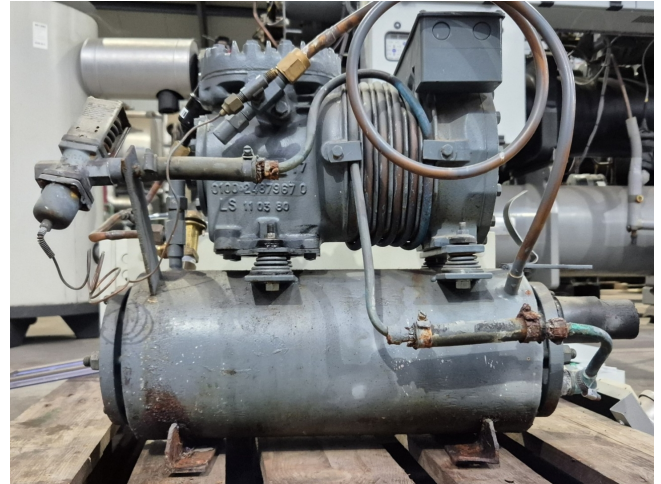


DWM DKSJB-100/EWL/000 Condensing unit

Specifications

Marka	DWM
Typ	DKSJB-100/EWL/000 Condensing unit
Czynnik chłodzący	Freon
kW at -5°C/+40°C	3,9
kW at -10°C/+40°C	3,2
kW at -20°C/+40°C	2,0
kW at -30°C/+40°C	1,1
kW at -40°C/+40°C	0,5
kW at -45°C/+40°C	0,3
Ciśnieniowe przełączniki bezpieczeństwa	✓
Wskaźniki ciśnienia	✓
Osuszający filter lini cieczy	✓
Okno widokowe	✓
Panel kontrolny	✓
m ³ / h	6,3
Condensing Unit	✓
Rozmiary	600x350x500 mm (LxWxH)
Stock	1



Description

Used DWM DKSJB-100/EWL/000 Condensing unit

Used DWM / Copeland water cooled condensing unit on Freon. Complete with DWM DKSJB-100/EWL/000 semi-hermetic reciprocating compressor, DWM WR2-KSJ-100H-LX/EWL shell and tube condenser, liquid line filter drier and pressure and safety switches/gauges and a control cabinet. The compressor has a displacement of 6,33 m³/h.

*Why choose for HOSBV? Were not only the largest used refrigeration specialist in Europe, but also, we deliver all equipment including an extensive test, warranty and industrial cleaning.

*Optional we can also perform a new paint job and arrange the logistics.

